

2011 Flood Event

North of Bismarck Mandan Page 1 of 3

This map represents the impact of a flow rate of 150,000 CFS release from Garrison Dam. This equates to a river stage of 20.6'

May 29, 2011 at 8:30 PM

Legend

★ Sand Bag Filling Sites

— Flood Surface Elevations (1988 Survey Datum)

— Existing Levees

Planned Levees

— Primary Levees - Approved

— Secondary Levees - Approved

— Areas Not Protected

— Areas to be Protected by Levees



1:48,000

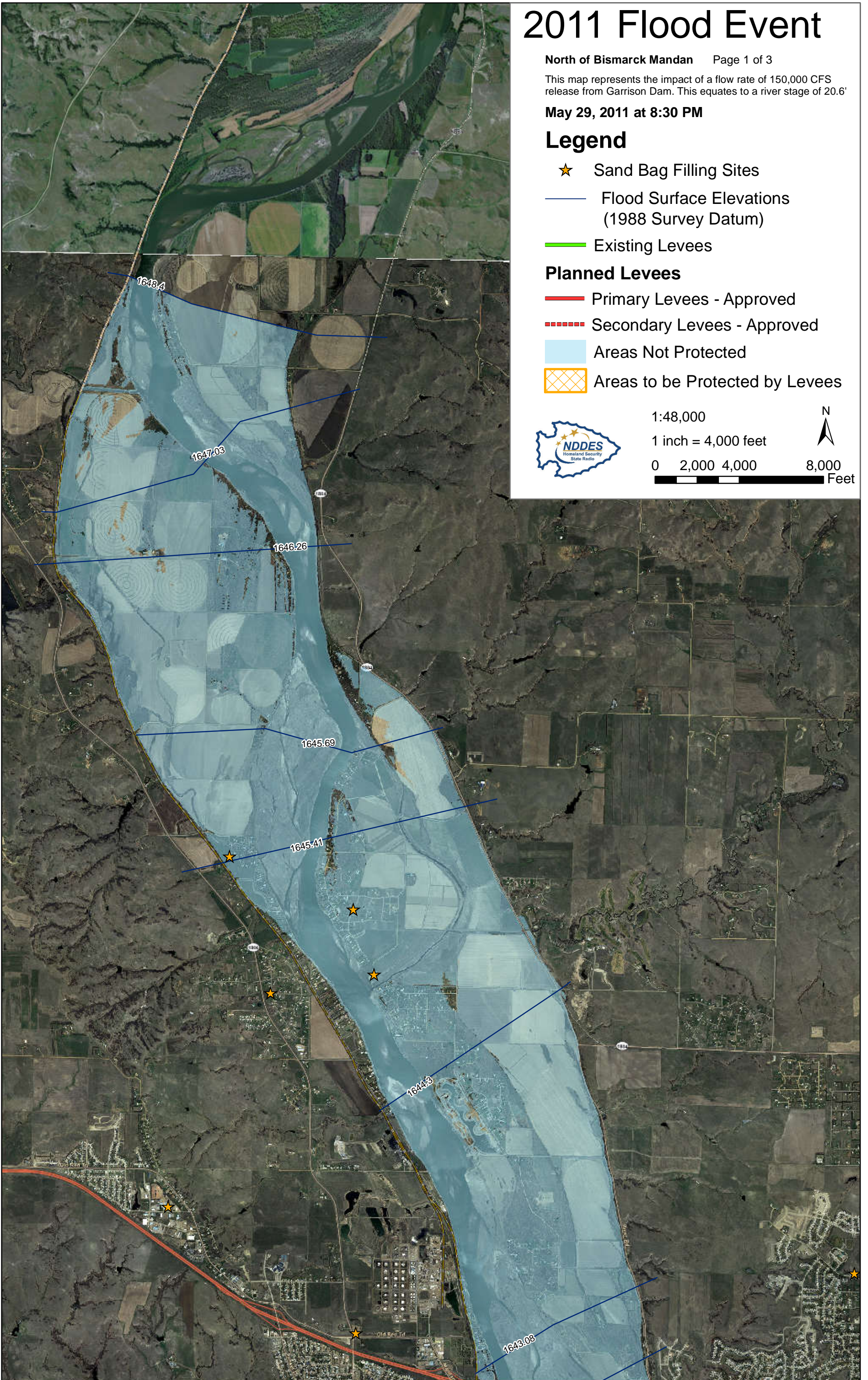
1 inch = 4,000 feet

0 2,000 4,000



8,000

Feet



2011 Flood Event

City Area

Page 2 of 3

This map represents the impact of a flow rate of 150,000 CFS release from Garrison Dam. This equates to a river stage of 20.6'

May 29, 2011 at 8:30 PM

Legend

★ Sand Bag Filling Sites

— Flood Surface Elevations (1988 Survey Datum)

— Existing Levees

Planned Levees

— Primary Levees - Approved

--- Secondary Levees - Approved

Areas Not Protected

Areas to be Protected by Levees



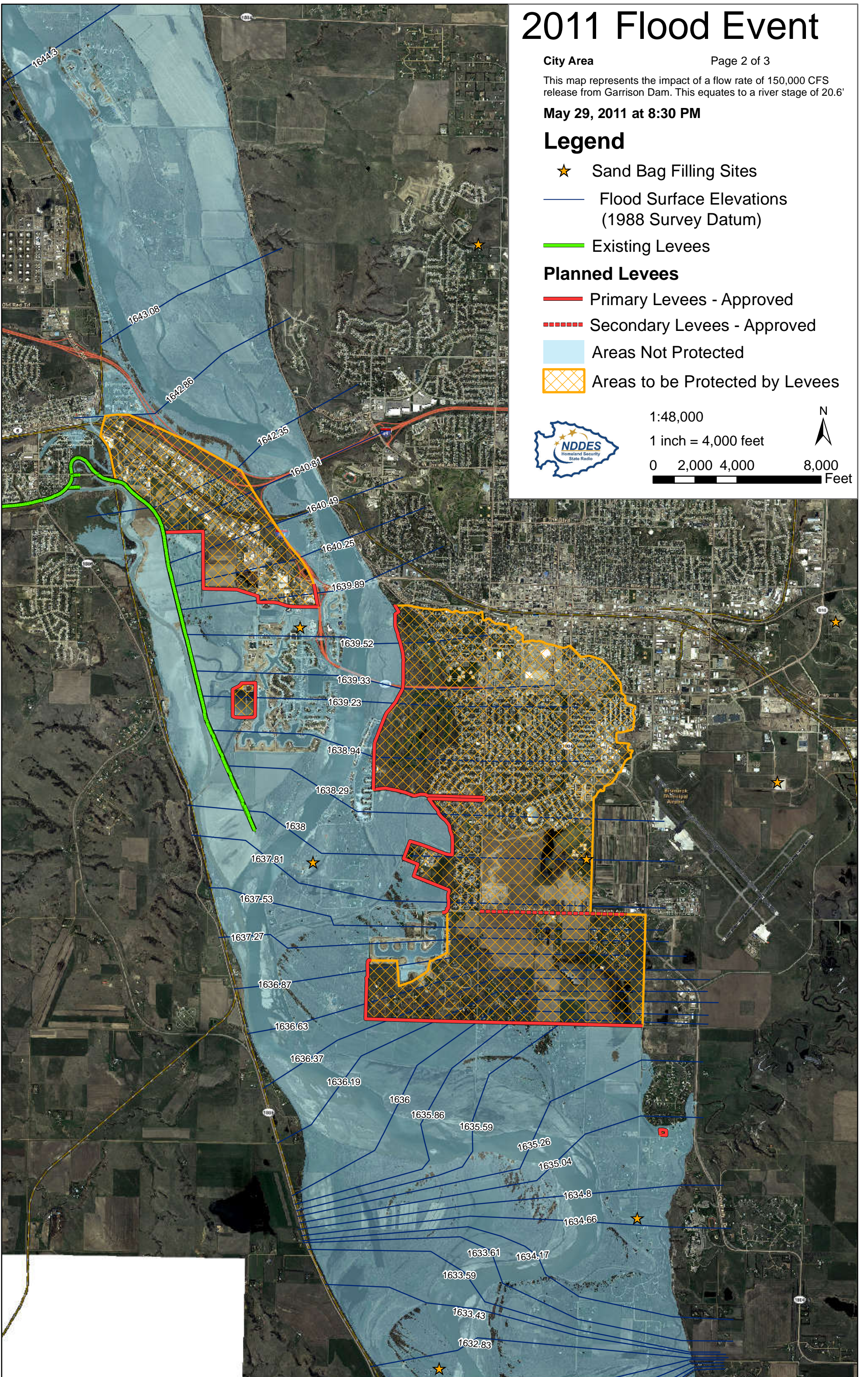
1:48,000

1 inch = 4,000 feet

0 2,000 4,000



8,000 Feet



2011 Flood Event

South of Bismarck Mandan Page 3 of 3

This map represents the impact of a flow rate of 150,000 CFS release from Garrison Dam. This equates to a river stage of 20.6'

May 29, 2011 at 8:30 PM

Legend

★ Sand Bag Filling Sites

— Flood Surface Elevations (1988 Survey Datum)

— Existing Levees

Planned Levees

— Primary Levees - Approved

- - - Secondary Levees - Approved

Areas Not Protected

Areas to be Protected by Levees



1:48,000

1 inch = 4,000 feet

0 2,000 4,000



8,000 Feet

